

HEXHAM

Wind Farm



KEY FACTS

Turbines

Up to 125

Turbine height

Up to 250 metres

Proposal location

South-west of Hexham and south-east of Caramut

Site size

About 16,000 hectares

Rates payable

Estimated at \$900,000 per year, for 25 years

Local Government

Moyne Shire

Responsible authority

Department of Environment, Land, Water and Planning

Landowners

14

Installed capacity

About 700 megawatts (MW)

Power generation

About 2400 gigawatt hours (GWh) per year

Homes powered

About 530,000 per year, or a city the size of Warrnambool more than 35 times over

Emission savings

About 2.7 million tonnes of CO₂ per year

Project status

Feasibility stage

Construction period

Two to three years

Project lifespan

25 years plus

PROJECT UPDATE

Wind Prospect is continuing to progress the proposed Hexham Wind Farm to planning approval.

An Environment Effects Statement (EES) referral for the project is expected to be submitted to the Victorian Government's Department of Environment, Land, Water and Planning (DELWP) by the end of the year.

The EES referral contains an initial assessment of potential environmental effects from the project and how these can be avoided or mitigated. The referral information enables the Planning Minister to assess the potential for significant environmental effects and determine the planning pathway the project will follow to achieve approval.

In preparation for this referral Wind Prospect, with the support of specialist consultants, has been undertaking a range of environmental assessments at the project site over many months.

These include preliminary assessments on:

- land and visual impact
- noise impacts
- flora and fauna - including Brolga and
- cultural and European heritage.

Wind Prospect will share further information on the project planning pathway following the Planning Minister's decision, which is expected in early 2022.

You can read further information on the project design and our Brolga assessments on page 2 of this newsletter.

Stay safe and well and we look forward to discussing the project with you soon.

Regards,

Rory McManus
Hexham Wind Farm
Development Manager



Project design and Brolga assessment

The project design is currently being revised and is being informed by the preliminary environmental assessments.

The new project design will include turbine-free buffer zones around potential Brolga breeding wetlands. These buffer zones have been developed in response to the latest independent research published by ecologist Dr Inka Veltheim, as well as consultation with landowners, field surveys of the site and surrounding areas, and observations of Brolga movements around Victorian breeding sites from studies over the last 15 years.

These buffer zones are expected to alter the layout of the project and will reduce the number of wind turbines from the maximum proposed 125. We are still working through this design process and will be able to share the revised project design in our next project newsletter.



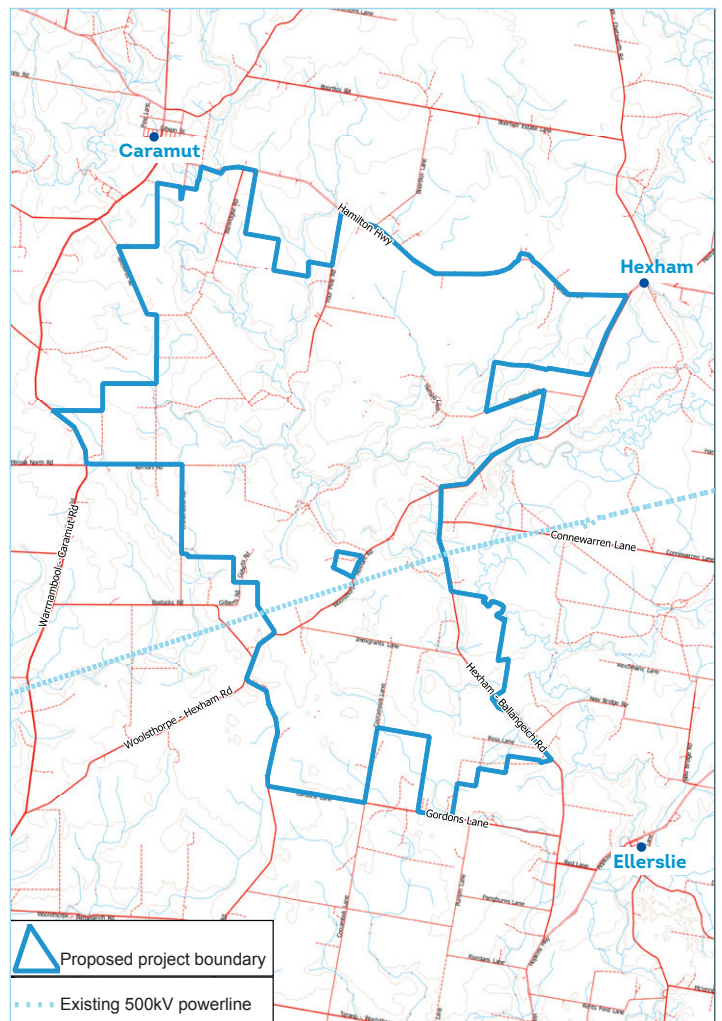
Photo supplied by Nature Advisory

Grid connection and electrical infrastructure

As mentioned in our last newsletter, the proposed wind farm will not include transmission lines outside the project boundary. Instead, an on-site terminal station will be developed next to the existing 500kV transmission line, which runs through the project area, to enable grid connection.

The proposed location of the terminal station and other electrical infrastructure within the project boundary will also be included in the revised design and shared in our next project newsletter.

The project will include a battery energy storage facility. The batteries would charge when the energy produced by the project is greater than the amount being exported to the electricity network. This stored energy can then be used as required, improving the stability of the electricity network.



NEIGHBOUR BENEFIT SHARING PROGRAM

In November last year we shared a flyer with you detailing the Neighbour Benefit Sharing Program for the Hexham Wind Farm. The program will operate the life of the wind farm, and share the benefits of the project with the local community. It incorporates:

1. The **Neighbour Benefit Payment** will provide annual payments to the owners of eligible dwellings and/or operating retail premises of up to \$30,000 per annum. This incorporates payments of \$3,500 per constructed turbine within 2 kilometres of a dwelling and/or retail premises; \$1,000 per constructed turbine between 2-3 kilometres; \$100 per constructed turbine between 3-6 kilometres.
2. An **Energy Cost Offset Plan**, designed to help those who receive the Neighbour Benefit Payment with the cost of electricity, with an annual value of up to \$2,000.

3. A one-off **Construction Payment** of \$1,000, payable to those who receive the Neighbour Benefit Payment at the substantial commencement of construction.

4. A **Community Benefit Fund** of \$1,000 per constructed turbine per year, to be administered by a community-led committee.

For further details on eligibility criteria, please visit www.hexhamwindfarm.com.au and download our Neighbour Benefit Sharing Program flyer from the News page.

BENEFIT SHARING SNAPSHOT

For those with a dwelling or operating a retail premises located within 6 kilometres of a constructed wind turbine (excluding those hosting infrastructure) for the 25-year plus lifetime of the project.



COMMUNITY FUNDING

Our sponsorship fund is open year-round and has \$20,000 of funding available per year. Forms can be found at www.hexhamwindfarm.com.au and we welcome your applications. We are pleased to have funded the following community projects:

Hexham Community Association - \$3,000

The Hexham Community Association will use its \$3,000 grant to install an all-abilities ramp at the entrance of the old school building. With the building dating to the 1800s, the installation of an all-abilities ramp will provide improved access for all community members.

Ellerslie War Memorial Trust - \$3,500

The Ellerslie War Memorial is updating its pathways, improving the viewing area and creating more seating. The Hexham Wind Farm has contributed \$3,500 to establish an 8x8 metre concrete pad, to allow a flat area for locals and visitors alike to stand during the annual Anzac Day ceremony.

Food & Fibre Great South Coast - \$5,000

The Great South Coast is Victoria's largest food and fibre region, with the sector underpinning about 60 per cent of the region's economy, providing more than one in five jobs. Hexham Wind Farm contributed \$5,000 to the group's campaign to attract young people to the variety of careers that exist in food and fibre.

Community engagement during COVID

Covid has restricted our ability to be active in the local community, but we are – as always – contactable on **1800 934 322** or info@hexhamwindfarm.com.au.

We are also hoping to organise drop-in sessions at local community halls in the near future, if COVID restrictions allow.

Stay safe and well and we look forward to seeing you in person soon.

Wind Prospect would like to encourage you to attend the

MORTLAKE SOUTH WIND FARM OPEN DAY



WHERE: 1515 Terang-Mortlake Road, Kolora, Vic

WHEN: Sunday, 28 November

TIME: 10am to 3pm (subject to Covid restrictions)

The Mortlake South Wind Farm is operated by Acciona Energy.

You can learn more at www.cleanenergycouncil.org.au.

Please visit the Clean Energy Council website to confirm details closer to the event.

Sunday,
28 November
2021



CONTACT US

Wind Prospect Pty Ltd
PO Box 110 Fitzroy VIC 3065

Ph: 1800 934 322

E: info@hexhamwindfarm.com.au

www.hexhamwindfarm.com.au